

Our examination of your car tires in the HEKA test report: Does your automobile have sufficient tire tread?



A bad tire is a road safety risk:

1. Extended braking distance two times longer!
2. Aquaplaning danger!
3. In case of an accident the insurance protection is lost!

We examine your tires for :

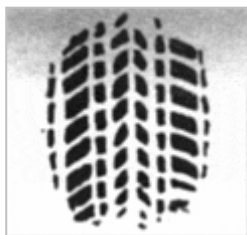
- the legally permissible depth of profile
- the prescribed air pressure
- functional valves
- abrasion damage
- the age of the tires! Older than six years?

Tire tread depth:

legal minimum depth of profile of the summer tires 1,6 mm

legal minimum depth of profile of the winter tires 4,0 mm

New tires have a tread depth of 8.0 mm.



The support surface of a tire on the road is just as big as a postcard.

As higher the driving speed is, the supporting surface become smaller, and i.e. also the road grip .
Above pictures show tire tread depths of: 8,0mm / 3,0mm / 1,6mm at a speed of 70km/h.

**Respect your profile,
for your own safety!**

Your service team informs you with pleasure.